



Audition Information 2023-2024

Youth Orchestra Auditions will consist of the following:

Brief solo (approx. 1 minute) of your choice
Orchestra excerpts (provided by KSYO)
Sightreading and Scales

Scales

Scales will include all keys for major scales, and chromatic from lowest note to highest note.

Audition Preparation

Lessons. Seek lessons from your private teacher. Please notice that some excerpts may not have many (or any!) *extra markings* or *bowings*. Your private teacher can help you with those aspects, as well as give you valuable advice on how to successfully prepare for your audition!

Listen to at least three different recordings of your audition repertoire. Listening to recordings is an important step in preparation for an audition (the *more* recordings, the better). Also, it is helpful to PLAY a recording while you practice!

Tempo. Perform at the tempo indicated. If a tempo is not indicated, get a general sense of tempo from recordings, and from your orchestra director/band director/private lesson instructor.

Practice slowly, with a metronome. After several slow passes through the excerpts, start to play faster: 1/2 tempo, 3/4 tempo, then full tempo. Practice at speeds slower and faster than the tempi indicated.

Intonation. Keep listening, carefully, to your intonation while practicing.

Wind and Brass players: work with a tuner. If you do not have one, buy one! A tuner is an essential tool in becoming a better performer.

Musicianship. Be careful to observe accents, dynamics, accidentals, written instructions and other musical aspects notated on the music. Knowledge of additional performance practices and traditions are important as well.

Pay attention to all details in the music. Read the music carefully and don't take anything for granted. Play musically once technique is established.

Rossini — La Gazza Ladra Overture

Posaune III.

♩ = 152

88 **a tempo** 27 **C**

120

126

132

f marc. sf

sf sf

sf

1 2

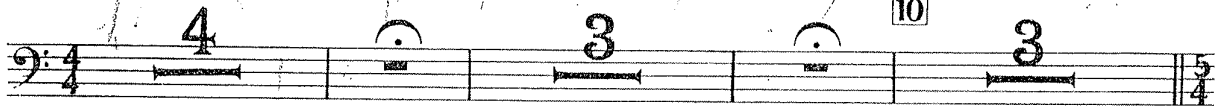
Detailed description: This block contains the musical notation for measures 88 through 132 of the Posaune III part. The music is written on a single staff in bass clef with a key signature of one sharp (F#). Measure 88 begins with a half rest, followed by a half note F# in measure 89. Measure 90 contains a half rest and a half note G# in measure 91. Measure 92 has a half note A and a half note B. Measure 93 features a half note C and a half note D. Measure 94 has a half note E and a half note F#. Measure 95 contains a half note G and a half note A. Measure 96 has a half note B and a half note C. Measure 97 features a half note D and a half note E. Measure 98 has a half note F# and a half note G. Measure 99 contains a half note A and a half note B. Measure 100 has a half note C and a half note D. Measure 101 features a half note E and a half note F#. Measure 102 has a half note G and a half note A. Measure 103 contains a half note B and a half note C. Measure 104 has a half note D and a half note E. Measure 105 features a half note F# and a half note G. Measure 106 has a half note A and a half note B. Measure 107 contains a half note C and a half note D. Measure 108 has a half note E and a half note F#. Measure 109 has a half note G and a half note A. Measure 110 features a half note B and a half note C. Measure 111 has a half note D and a half note E. Measure 112 contains a half note F# and a half note G. Measure 113 has a half note A and a half note B. Measure 114 features a half note C and a half note D. Measure 115 has a half note E and a half note F#. Measure 116 has a half note G and a half note A. Measure 117 contains a half note B and a half note C. Measure 118 has a half note D and a half note E. Measure 119 features a half note F# and a half note G. Measure 120 has a half note A and a half note B. Measure 121 contains a half note C and a half note D. Measure 122 has a half note E and a half note F#. Measure 123 has a half note G and a half note A. Measure 124 features a half note B and a half note C. Measure 125 has a half note D and a half note E. Measure 126 contains a half note F# and a half note G. Measure 127 has a half note A and a half note B. Measure 128 features a half note C and a half note D. Measure 129 has a half note E and a half note F#. Measure 130 has a half note G and a half note A. Measure 131 contains a half note B and a half note C. Measure 132 has a half note D and a half note E. The score includes dynamic markings: *f* (forte) at measure 89, *marc.* (marcato) at measure 90, *sf* (sforzando) at measure 91, *sf* at measure 100, *sf* at measure 104, *sf* at measure 112, *sf* at measure 120, and *sf* at measure 128. There are also crescendo and decrescendo hairpins. The tempo marking 'a tempo' is above measure 88. The time signature 'C' (common time) is above measure 89. The first ending bracket is above measure 131, and the second ending bracket is above measure 132.

I. I pini di Villa Borghese - TACE

II. Pini presso una Catacomba

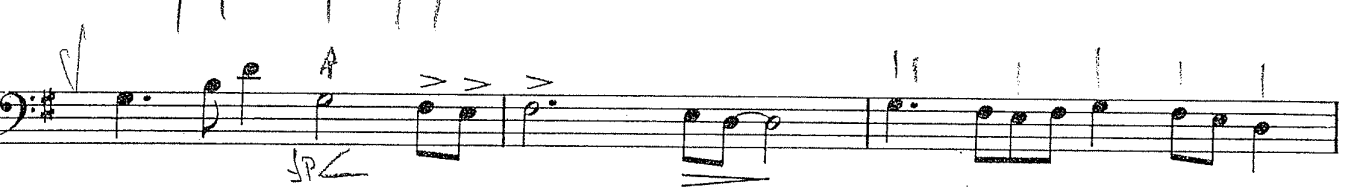
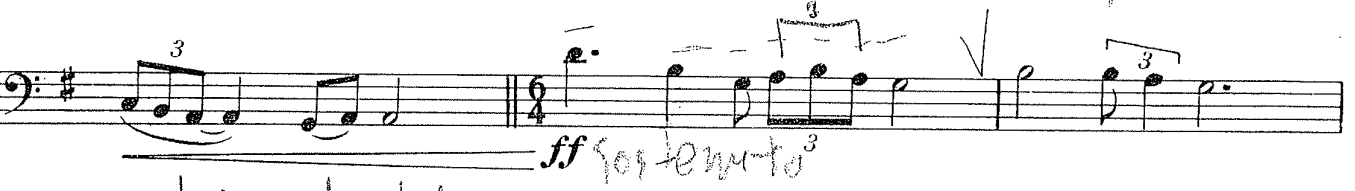
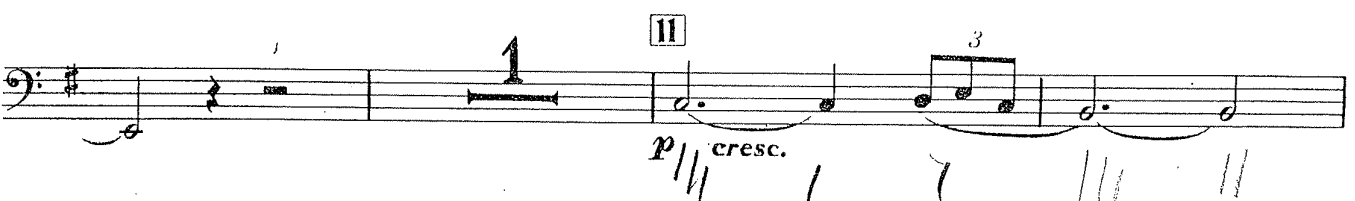
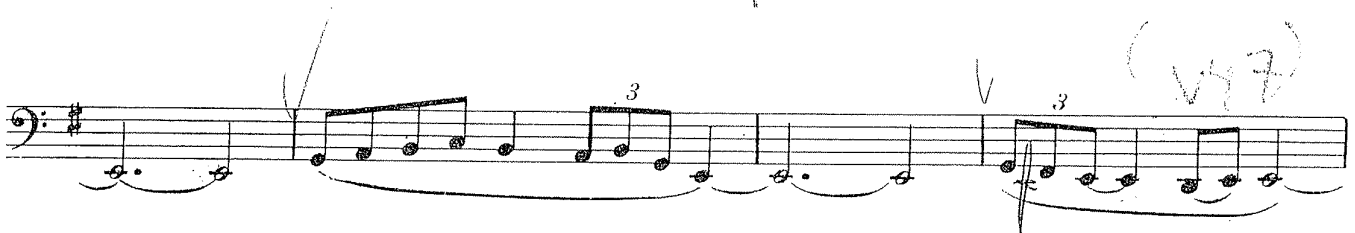
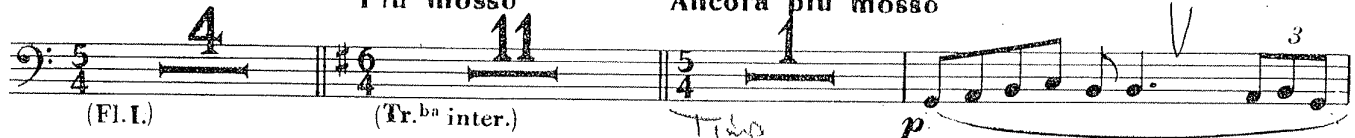
TROMBONE III.

Lento



Più mosso

Ancora più mosso



Proprietà G. RICORDI & C., Editori - Stampatori, MILANO.

Tutti i diritti sono riservati.

Tous droits d'exécution, de diffusion, de reproduction et d'arrangement réservés.

(PRINTED IN ITALY)

(Copyright MCMXXV, by G. RICORDI & Co.)
Copyright renewed 1953.

119882 - XXV.

(IMPRIMÉ EN ITALIE)